

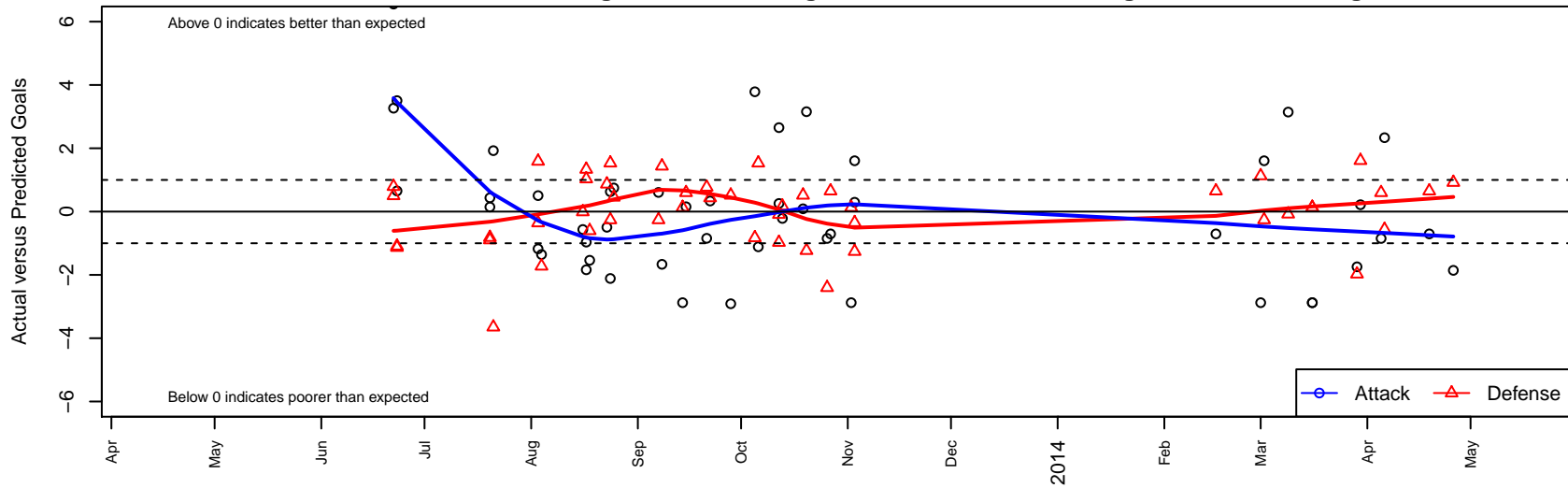
Eastside Timbers Red B01

Eastside United FC
 Gresham, OR
 B01 total strength=1193
 attack=4.43 defense=3.44
 fall league = FWRL B01 U12 Premier Round 1,
 alt names used:
 EastSide Timbers 01B Red
 EASTSIDE TIMBERS '01 RED
 Eastside Timbers 01 RED
 Eastside Timbers '01B Red
 EASTSIDE TIMBERS ' 01 RED (OR)

Venues played:
 US Club Regionals Premier U11
 Beaverton Cup BU13 Gold
 Surf Boys U12 U12
 Mt Hood Challenge BU13 Premier
 NW Champions League U12
 OPL National Premier League U12
 FWRL B01 U12 Premier Round 1
 Spr OYS PTT B01 Timbers Premier
 OYS State Cup B01



Eastside Timbers Red B01
 Dots are actual minus expected GF (blue circles) and GA (red triangles).
 Blue line is smoothed change in attack strength. Red is smoothed change in defense strength.



	date	home		away		venue	pred.home	pred.away
26731	2014-04-26	Eastside Timbers Red B01	1	Salem Chelsea B01	0	OYS State Cup B01	2.86	0.92
26569	2014-04-19	Bend FC Timbers Red B01	0	Eastside Timbers Red B01	5	OYS State Cup B01	0.65	5.71
25861	2014-04-06	Westside Timbers Copa B01	2	Eastside Timbers Red B01	5	Spr OYS PTT B01 Timbers Premier	1.44	2.67
25660	2014-04-05	Eastside Timbers Black B01	0	Eastside Timbers Red B01	3	Spr OYS PTT B01 Timbers Premier	0.60	3.85
25524	2014-03-30	PacNW Maroon B01	0	Eastside Timbers Red B01	3	FWRL B01 U12 Premier Round 1	1.61	2.78
25444	2014-03-29	Eastside Timbers Red B01	0	FC Alliance A B01	3	FWRL B01 U12 Premier Round 1	1.74	1.02
24917	2014-03-16	River Plate SC 24K B01	1	Eastside Timbers Red B01	3	FWRL B01 U12 Premier Round 1	1.13	5.88
24932	2014-03-16	Eastside Timbers Red B01	3	River Plate SC 24K B01	1	Spr OYS PTT B01 Timbers Premier	5.88	1.13
24253	2014-03-09	Salem Chelsea B01	1	Eastside Timbers Red B01	6	Spr OYS PTT B01 Timbers Premier	0.92	2.86
23696	2014-03-02	Eastside Timbers Red B01	5	Washington Timbers Red B01	1	Spr OYS PTT B01 Timbers Premier	3.39	0.74
23450	2014-03-01	River Plate SC 24K B01	0	Eastside Timbers Red B01	3	Spr OYS PTT B01 Timbers Premier	1.13	5.88
22671	2014-02-16	Eastside Timbers Red B01	5	Bend FC Timbers Red B01	0	Spr OYS PTT B01 Timbers Premier	5.71	0.65
17196	2013-11-03	Eastside Timbers Red B01	5	Washington Timbers Red B01	2	OPL National Premier League U12	3.39	0.74
17199	2013-11-03	Eastside Timbers Red B01	6	Bend FC Timbers Red B01	1	OPL National Premier League U12	5.71	0.65
16698	2013-11-02	River Plate SC 24K B01	1	Eastside Timbers Red B01	3	OPL National Premier League U12	1.13	5.88
16192	2013-10-27	Eastside Timbers Red B01	5	Bend FC Timbers Red B01	0	OPL National Premier League U12	5.71	0.65
15802	2013-10-26	Eastside Timbers Red B01	3	Eastside Timbers Black B01	3	OPL National Premier League U12	3.85	0.60
15275	2013-10-20	FC West Inter B01	2	Eastside Timbers Red B01	6	OPL National Premier League U12	0.77	2.84
14880	2013-10-19	Eastside Timbers Red B01	4	THUSC Titanium B01	0	OPL National Premier League U12	3.91	0.52
14305	2013-10-13	Eastside FC Red B01	1	Eastside Timbers Red B01	2	NW Champions League U12	1.17	2.22
13819	2013-10-12	ISC Gunners A B01	1	Eastside Timbers Red B01	5	NW Champions League U12	0.91	2.35
13827	2013-10-12	FC Alliance A B01	2	Eastside Timbers Red B01	2	NW Champions League U12	1.02	1.74
13236	2013-10-06	WPFC Black B01	0	Eastside Timbers Red B01	1	FWRL B01 U12 Premier Round 1	1.53	2.11
12755	2013-10-05	Eastside Timbers Red B01	6	Eastside FC Red B01	2	FWRL B01 U12 Premier Round 1	2.22	1.17
11858	2013-09-28	THUSC Titanium B01	0	Eastside Timbers Red B01	1	OPL National Premier League U12	0.52	3.91
11362	2013-09-22	Westside Timbers Copa B01	1	Eastside Timbers Red B01	3	OPL National Premier League U12	1.44	2.67
10910	2013-09-21	Eastside Timbers Red B01	2	FC West Inter B01	0	OPL National Premier League U12	2.84	0.77
10394	2013-09-15	Eastside Timbers Black B01	0	Eastside Timbers Red B01	4	OPL National Premier League U12	0.60	3.85

	date	home		away		venue	pred.home	pred.away
9937	2013-09-14	Eastside Timbers Red B01	3	River Plate SC 24K B01	1	OPL National Premier League U12	5.88	1.13
9439	2013-09-08	Eastside Timbers Red B01	1	Westside Timbers Copa B01	0	OPL National Premier League U12	2.67	1.44
8992	2013-09-07	Washington Timbers Red B01	1	Eastside Timbers Red B01	4	OPL National Premier League U12	0.74	3.39
8348	2013-08-25	Eastside Timbers Red B01	2	Seattle United Copa B01	1	NW Champions League U12	1.25	1.45
7953	2013-08-24	Eastside Timbers Red B01	5	Boise Nationals Galaxy White B01	1	NW Champions League U12	4.37	0.74
7956	2013-08-24	Eastside Timbers Red B01	0	WPFC Black B01	0	NW Champions League U12	2.11	1.53
7652	2013-08-23	Eastside Timbers Red B01	1	Crossfire Premier A B01	1	NW Champions League U12	1.49	1.87
7473	2013-08-18	Eastside Timbers Red B01	0	Crossfire Oregon Green I B00	2	Mt Hood Challenge BU13 Premier	1.54	1.40
7118	2013-08-17	PacNW Maroon B00	0	Eastside Timbers Red B01	1	Mt Hood Challenge BU13 Premier	1.03	2.84
7142	2013-08-17	Westside Timbers Copa B00	1	Eastside Timbers Red B01	0	Mt Hood Challenge BU13 Premier	2.34	0.96
6837	2013-08-16	Eastside Timbers Red B01	2	Idaho Rush Nike B00	1	Mt Hood Challenge BU13 Premier	2.57	0.99
5691	2013-08-04	Sereno 02 White B01	3	Eastside Timbers Red B01	1	Surf Boys U12 U12	1.28	2.36
5409	2013-08-03	San Diego Surf SC Premier I B01	2	Eastside Timbers Red B01	2	Surf Boys U12 U12	1.64	1.50
5412	2013-08-03	FC Golden State Academy B01	0	Eastside Timbers Red B01	0	Surf Boys U12 U12	1.59	1.18
4221	2013-07-21	BSC Portland Black B00	5	Eastside Timbers Red B01	4	Beaverton Cup BU13 Gold	1.35	2.07
3769	2013-07-20	Sting SC Manchester B00	2	Eastside Timbers Red B01	4	Beaverton Cup BU13 Gold	1.11	3.85
3779	2013-07-20	Eastside Timbers Red B01	2	Westside Timbers Samba B00	2	Beaverton Cup BU13 Gold	1.56	1.18
1958	2013-06-23	ISC Gunners A B01	2	Eastside Timbers Red B01	3	US Club Regionals Premier U11	0.91	2.35
1960	2013-06-23	Crossfire Premier A B01	3	Eastside Timbers Red B01	5	US Club Regionals Premier U11	1.87	1.49
1778	2013-06-22	Eastside Timbers Red B01	11	Tynecastle FC B01	0	US Club Regionals Premier U11	4.44	0.79
1782	2013-06-22	Tacoma United San Martin B01	0	Eastside Timbers Red B01	11	US Club Regionals Premier U11	0.50	7.73